



HOBSONVILLE POINT  
Moments away, a world apart.



At Hobsonville Point, homebuyers can choose from a wide range of apartments, terraces, duplexes and standalone homes, all complemented by 26ha of green spaces, a vibrant waterfront hospitality scene, walkable streets and great schools. So no matter your lifestyle, age or stage, you're sure to find a home here that's right for you.

## HOMES FOR SALE

### APARTMENT



2 | 1 | 0 | 72m<sup>2</sup>

MARLBOROUGH 201, LAUNCH BAY

- Brand new Axis apartments
- Safe, secure and modern
- Minutes away from Catalina Bay precinct

**\$600,000**

Edwin Killick  
021 292 0362

WINTON

### TERRACE



3 | 1.5 | 1 | 111m<sup>2</sup>

BB9, 18 NUGGET AVENUE

- Modern three-bedroom home, light and bright
- Brand new and ready to move in now
- Short stroll to the local park, shops, and cafés

**\$835,000**

Steve Lindsey  
021 963 978

univers<sup>+</sup>  
THE LIVING DIFFERENCE

### APARTMENT



2 | 1 | 1

SB4 UNIT 18, BUCKLEY AVENUE

- Beautiful 2 bedroomed waterside apartment in great location
- Easy access to ferry, market and Coastal Walkway
- Spacious balcony overlooking water and capturing all day sun

**\$699,000**

Roz Hughes  
021 194 7179

classic  
builders

# HOMES FOR SALE

## STANDALONE



3-4 | 2.5 | 2 | 228m<sup>2</sup>

### JACK SEABROOK

- Architecturally designed 3/4 bed home
- Solid oak timber floors, stone benchtop, double garage
- Construction underway, move in by Summer!

**\$1,799,000**

sales@jalcon.co.nz  
0800 77 11 11



## TERRACE



4 | 2.5 | 1 | 1 | 190m<sup>2</sup>

### 63 MAPOU ROAD

- Fantastic newly built home
- Fully fenced backyard to enjoy the outdoor living
- Short walk to high school, café and Hobson Centre

**\$1,049,000**

Geoff Polly Polglase  
027 487 4663



## APARTMENT



3 | 2 | 2 | 107m<sup>2</sup>

### 107/57 MAPOU ROAD

- Fantastic north facing balcony
- Secure basement parking
- Single level floor plan perfect for empty nesters
- Pet friendly - bring Fido with you!

**\$779,000**

Geoff Polly Polglase  
027 487 4663



## APARTMENT



2 | 2 | 1 | 89m<sup>2</sup>

### G02/57 MAPOU ROAD

- Secure basement parking
- Perfect floor plan for flatters
- 64m<sup>2</sup> patio to chase the sun
- Pet friendly

**\$769,000**

Geoff Polly Polglase  
027 487 4663



## APARTMENT



3 | 1.5 | 1

### 11 DANGA LANE

- Only two remain at this price
- Designer kitchen with quality appliances
- Spacious sunny balcony, perfect for entertaining
- Ready for you to move in and make your own

**\$799,000**

Christina Tubman  
027 334 4752



## TERRACE



3 | 2 | 2

### SB6 LOT 2, MARINE PARADE

- Premium finish home on water's edge
- Luxury fixtures and fitting plus side by side double garaging
- Just minutes from ferry port and waterside restaurants

**\$1,399,000**

Roz Hughes  
021 194 7179



KEEP UP TO DATE





# HOMES FOR SALE

## TERRACE



3 | 1 | 1

BB13 LOT 14, GREENWAY STREET

- Delightful three-bedroom terraced home
- Modern interior with contemporary finish
- Quiet location on the edge of Hobsonville Point

**\$754,000**

Roz Hughes  
021 194 7179



## APARTMENT



3 | 1.5 | 1

15 DANGA LANE

- Premium end apartment with loads of natural light
- Designer kitchen, open plan living and dining
- Be quick, only two remain!
- Walking distance to water, cafés, schools and more

**\$819,000**

Susan Annett  
027 209 5371

**Fletcher Living**

## STANDALONE



3-4 | 2.5 | 2 | 248m<sup>2</sup>

JACK SEABROOK

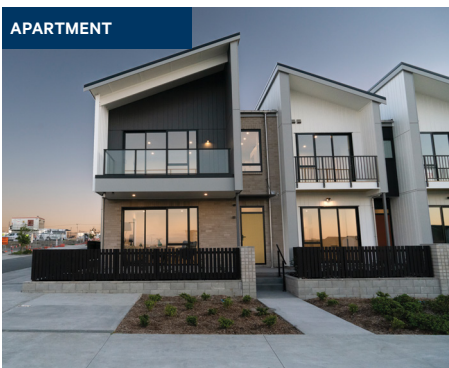
- Architecturally designed 3/4 bed home
- Solid oak timber floors, stone benchtop, double garage
- Construction underway, move in by Summer!

**\$1,890,000**

sales@jalcon.co.nz  
0800 77 11 11



## APARTMENT



3 | 1.5 | 1 | 94m<sup>2</sup>

BB10, 32 NUGGET AVENUE

- Elevated and overlooking park with courtyard step-down onto walkway
- End terrace living, with open plan living and bedrooms all on ground level
- Much sought after location and close to local shops and cafés

**\$815,000**

Lisa Fleming  
021 679 674



## TERRACE



3 | 2.5 | 2 | 171m<sup>2</sup>

WALTER MERTON ROAD

- Architecturally designed 3-bed home
- Ideal lock up and leave lifestyle
- Double internal garage

**\$950,000**

sales@jalcon.co.nz  
0800 77 11 11



## APARTMENT



3 | 1.5 | 1 | 115m<sup>2</sup>

TE URU 2, 24 RARANGA LANE

- Private ground floor entrance with two levels of living above
- Large covered deck space off the main lounge area
- Close to local amenities and walking paths

**\$755,000**

Maryanne Bawden  
021 837 002

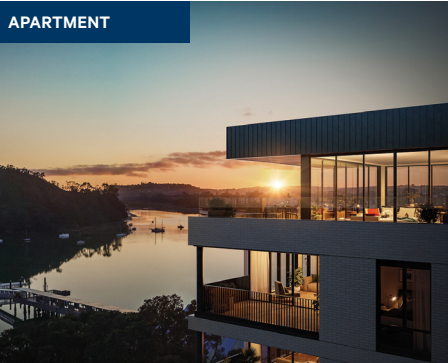


KEEP UP TO DATE



# HOMES FOR SALE

## APARTMENT



2 | 2 | 1 | 95m<sup>2</sup>

### OVATION 102, LAUNCH BAY

- Boutique apartment living
- Your entry point into Ovation
- Enjoy waterfront living

**\$1,200,000**

Edwin Killick  
021 292 0362

WINTON

## TERRACE



3 | 1.5 | 1 | 99m<sup>2</sup>

### 25 WALTER MERTON ROAD

- 8 Axis Homes
- Ready when you are
- Visit our show home at 23 Nugget Ave

**\$650,000**

Jim Rodgers  
021 832 075

MODUL

## TERRACE



3 | 1.5 | 1 | 99m<sup>2</sup>

### 27 WALTER MERTON ROAD

- Architecturally designed and fully landscaped
- Modular Construction
- Just add you

**\$799,000**

Jim Rodgers  
021 832 075

MODUL



## NEW HOMES FOR SALE EVERY WEEK

See the latest full price list here  
(updated weekly).



HOBSONVILLE POINT





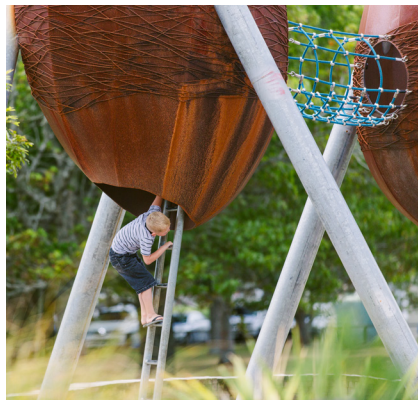
## Make a day of it

The best way to picture yourself living at Hobsonville Point is to visit! Make a day of it and meander along our 5km coastal walkway, visit the Farmers Market, and have a bite at Fabric Café and Bistro or Little Creatures microbrewery. Drop into the Information

Centre at 1 Hastings Street (behind Catalina Cafe) to meet with our friendly Information Centre manager, who can give you an overview of the different neighbourhoods and builder partners, point you to the show homes, and answer any questions.



Catalina Bay Farmers Market



Hobsonville Point Playground



Little Creatures Brewery



Coastal Walkway



Fabric Cafe and Bistro



Didsbury Art Trail