









# THE DIDSBURY ART TRAIL

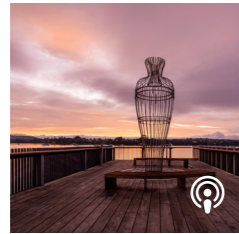
ART FOR EVERYONE



-  DIDSBURY ART TRAIL
-  TRAIL EXTENSION
-  ART/ POINT OF INTEREST
-  AUDIO TOUR
-  SHOW HOME
-  COASTAL WALKWAY
-  PARKS

 **BYO HEADPHONES**  
Hear from the artists themselves by downloading the Didsbury Art Trail audio tour. Just search for 'Didsbury Trail' in your preferred podcast app.

WHAT YOU'LL SEE ON THE TRAIL



× **Hinaki / Guardian**

*Virginia King*

FERRY WHARF,  
THE LANDING



× **Estuarine**

*Louise Purvis*

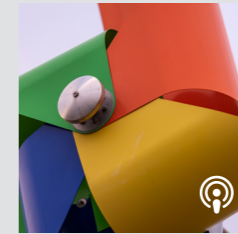
LAUNCH ROAD



× **Te Kanohi o Te Manu**  
(The Eye of the Bird)

*Philipp Meier*

HARRIER POINT



× **The Playing Windmills**

*Leon van den Eijkel*

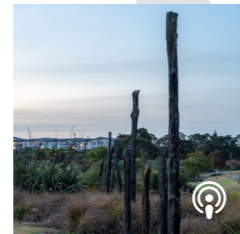
CORNER DE HAVILLAND AND WALLACE ROADS



× **Remnants of Flight**

*Nick Eagles*

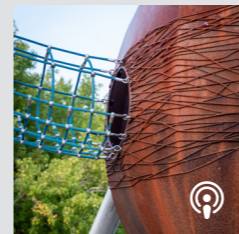
HOBSONVILLE POINT PARK PLAZA



× **Tiwatawata**

*John Reynolds*

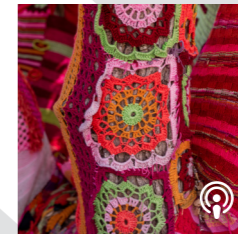
HOBSONVILLE POINT PARK



× **Children's Playground**

*Philipp Meier, Isthmus Group, and Cicada Workshop*

HOBSONVILLE POINT PARK



× **Tree Cosy**

*A team effort, led by Alison Milne of Knitted Graffiti*

LAUNCH ROAD



× **Clip, Tool, Heart of Stumps**

*Stephen Woodward*

CORNER BUCKLEY AVE AND HOBSONVILLE POINT ROAD



× **From the Ground Up**

*Tiffany Singh, Wiremu Diamond, and Hobsonville Point Primary students*

HOBSONVILLE POINT PARK



× **Rifle Range**

This heritage site served as a machine gun range for Air Force personnel, the SAS, Navy and the Diplomatic Protection Squad.

BOMB POINT DRIVE



× **Chichester Cottage**

Small and simple but with plenty of heart, Chichester Cottage has stood the test of time since it was built in 1927.

CHICHESTER LANE